

6

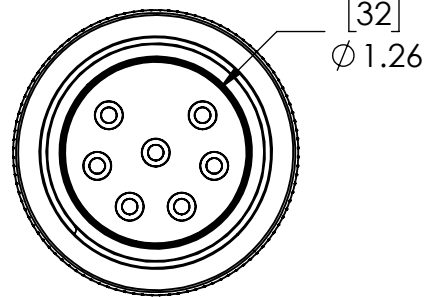
5

4

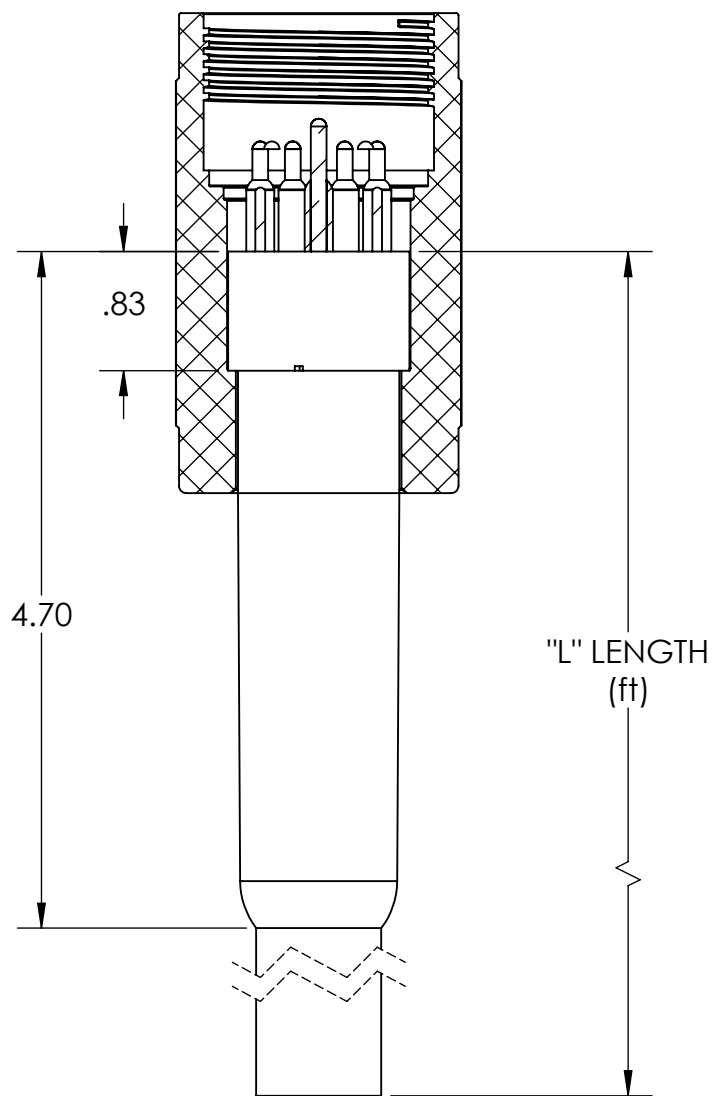
3

2

1

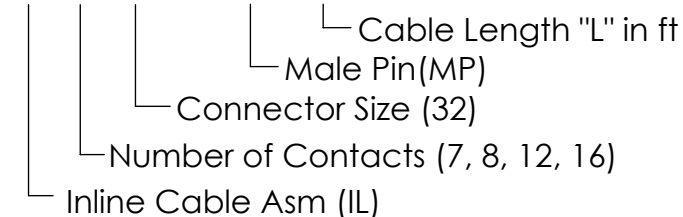


7-WAY SHOWN FOR REFERENCE



### Part numbering scheme

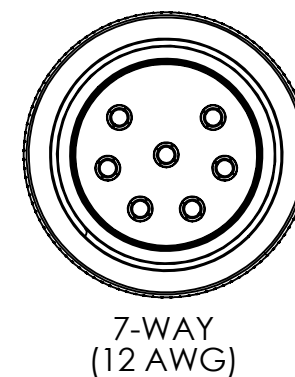
IL - 7x32mm - MP - 25



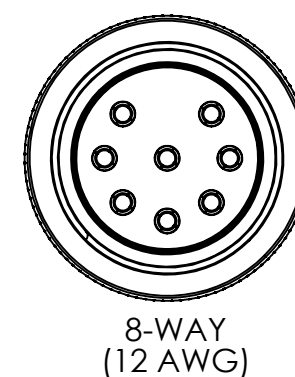
Contact to SOOW cable assignment (Based on ICEA Method 1 Color Code)

Contact #	Wire Color
1	Black
2	White
3	Red
4	Green
5	Orange
6	Blue
7	White w/Black Stripe
8	Red w/Black Stripe
9	Green w/black Stripe
10	Orange w/black Stripe
11	Blue w/Black Stripe
12	Black w/white Stripe
13	Red w/white Stripe
14	Green w/white Stripe
15	Blue w/white Stripe
16	Black w/red Stripe

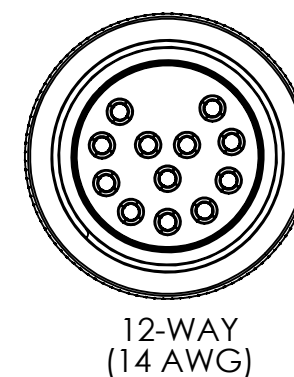
REVISIONS			
REV.	DESCRIPTION	DATE	APPROVED
0	INITIAL RELEASE	5-8-2024	SCC



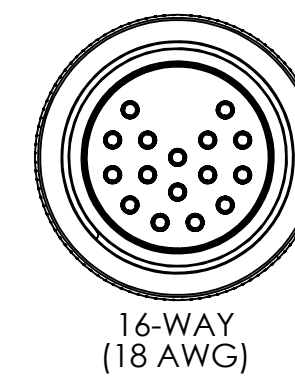
7-WAY (12 AWG)



8-WAY (12 AWG)



12-WAY (14 AWG)



16-WAY (18 AWG)

### Specifications

Voltage Rating	600V
Pressure Rating	10,000 psi
Pin Material	Gold Plated Cu Alloy
Dielectric Material	Neoprene (EPDM Optional)
Cable	SOOW
Locking Sleeve	Delrin



REVISION SYMBOL

THIS DRAWING CONTAINS PROPRIETARY INFORMATION OF AK INDUSTRIES. USE, DUPLICATION OR DISCLOSURE, IN WHOLE OR IN PART, IS STRICTLY PROHIBITED WITHOUT EXPRESS WRITTEN PERMISSION OF AN AUTHORIZED REPRESENTATIVE OF AK INDUSTRIES.

UNLESS OTHERWISE SPECIFIED DIMENSIONS ARE IN INCHES TOLERANCES ARE:

FRACTIONS	DECIMALS	ANGLES
±1/16	.XX±.015	±1/2°
	.XXX±.005	
	.XXXX±.0010	

BREAK ALL SHARP EDGES & CORNERS R.015. ALL DIA. TO BE CONCENTRIC WITHIN .004 TIR.

FINISH 125

DO NOT SCALE DRAWING

ORIGINAL JOB NO.

NAME	DATE
ENGR SCC	5/8/2024

CHKD

APPRV



THIRD ANGLE PROJECTION GD&T IAW ASME Y14.5



AK Industries phone: 310-762-1600  
3115 E. Las Hermanas St. fax: 310-762-1616  
Rancho Dominguez, CA 90221 e-mail: info@ak-ind.com

Inline (IL), Pigtail, 32 mm, SOOW Cable, Male Pins

SIZE	FSCM NO.	DWG. NO.	REV
B		IL-32mm-MP	0
SCALE:	APPROXIMATE WEIGHT: LBS		SHEET 1 OF 1

6

5

4

3

2

1