

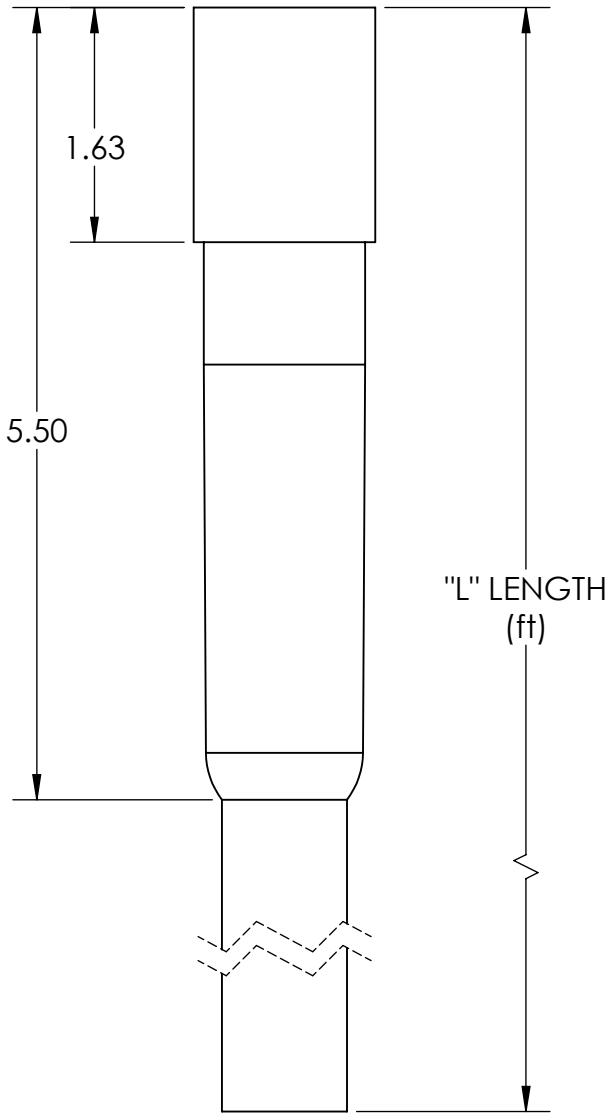
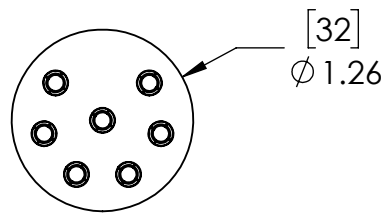
REVISIONS			
REV.	DESCRIPTION	DATE	APPROVED
0	PRODUCTION RELEASE	2/24/2024	SCC
1	ADDED FMLB NOTE, REMOVED LS	3/11/2024	SCC

Part numbering scheme

IL - 7x32mm - FS - 25

- IL - Inline Cable Asm (IL)
- 7 - Number of Contacts (7, 8, 12, 16)
- 32 - Connector Size (32)
- FS - Female Socket (FS)
- 25 - Cable Length "L" in ft

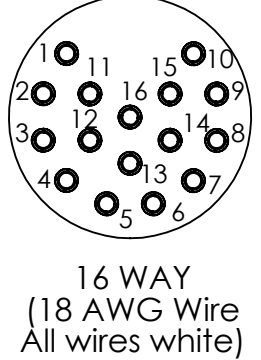
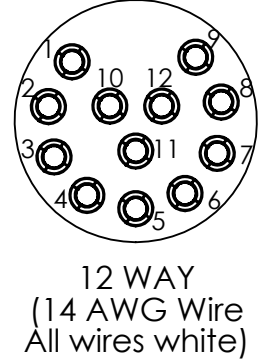
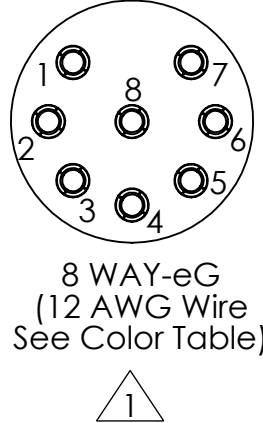
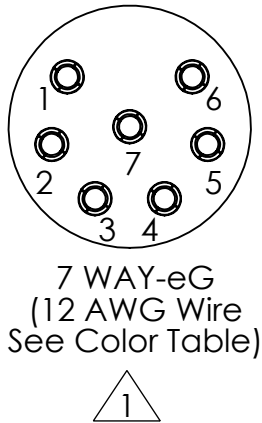
7-WAY SHOWN FOR REFERENCE



Contact to SOOW cable assignment
(Based on ICEA Method 1 Color Code)

Contact #	Wire Color
1	Black
2	White
3	Red
4	Green
5	Orange
6	Blue
7	White w/Black Stripe
8	Red w/Black Stripe
9	Green w/black Stripe
10	Orange w/black Stripe
11	Blue w/Black Stripe
12	Black w/white Stripe
13	Red w/white Stripe
14	Green w/white Stripe
15	Blue w/white Stripe
16	Black w/red Stripe

FACE VIEW



NOTES:
 1 These insert arrangements include FMLB (First Mate Last Break) contacts

Specifications	
Voltage Rating	600V
Pressure Rating	10,000 psi
Socket Material	Gold Plated Cu Alloy
Dielectric Material	Neoprene (EPDM Optional)
Cable	SOOW

1 REVISION SYMBOL

THIS DRAWING CONTAINS PROPRIETARY INFORMATION OF AK INDUSTRIES. USE, DUPLICATION OR DISCLOSURE, IN WHOLE OR IN PART, IS STRICTLY PROHIBITED WITHOUT EXPRESS WRITTEN PERMISSION OF AN AUTHORIZED REPRESENTATIVE OF AK INDUSTRIES.

UNLESS OTHERWISE SPECIFIED DIMENSIONS ARE IN INCHES TOLERANCES ARE: FRACTIONS DECIMALS ANGLES $\pm 1/16$.XX ± 0.015 $\pm 1/2^\circ$.XXX ± 0.005 .XXXX ± 0.0010 BREAK ALL SHARP EDGES & CORNERS R.015. ALL DIA. TO BE CONCENTRIC WITHIN .004 TIR. FINISH 125		ORIGINAL JOB NO.	AK Industries 3115 E. Las Hermanas St. Rancho Dominguez, CA 90221 phone: 310-762-1600 fax: 310-762-1616 e-mail: info@ak-ind.com								
DO NOT SCALE DRAWING		<table border="1"> <tr> <th>NAME</th> <th>DATE</th> </tr> <tr> <td>ENGR SCC</td> <td>6/21/23</td> </tr> <tr> <td>CHKD</td> <td></td> </tr> <tr> <td>APPRV</td> <td></td> </tr> </table>		NAME	DATE	ENGR SCC	6/21/23	CHKD		APPRV	
NAME	DATE										
ENGR SCC	6/21/23										
CHKD											
APPRV											
THIRD ANGLE PROJECTION GD&T IAW ASME Y14.5		<table border="1"> <tr> <td>SIZE</td> <td>FSCM NO.</td> <td>DWG. NO.</td> <td>REV</td> </tr> <tr> <td>B</td> <td></td> <td>IL-32mm-FS</td> <td>1</td> </tr> </table>	SIZE	FSCM NO.	DWG. NO.	REV	B		IL-32mm-FS	1	
SIZE	FSCM NO.	DWG. NO.	REV								
B		IL-32mm-FS	1								

Inline (IL), Pigtail, 32 mm, SOOW Cable, Female Sockets

SCALE: APPROXIMATE WEIGHT: LBS SHEET 1 OF 1