

6

5

4

3

2

1

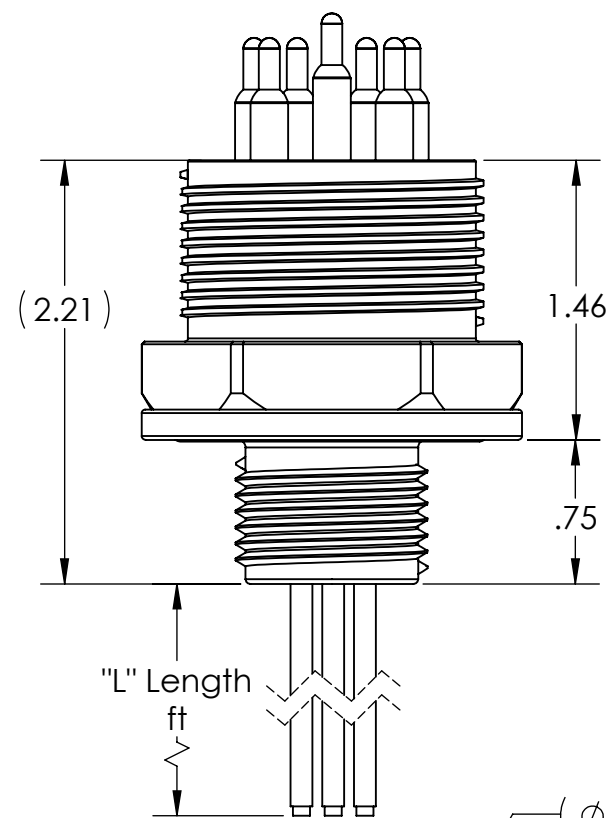
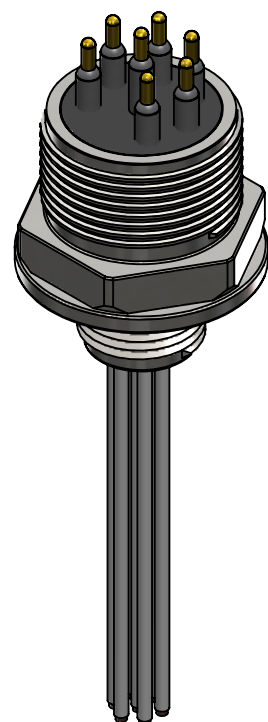
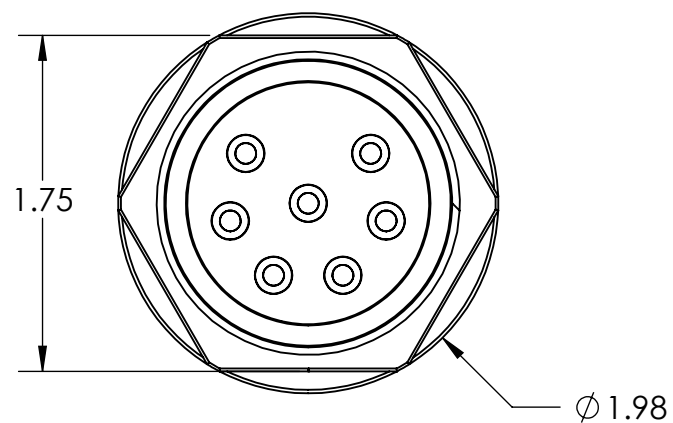
REVISIONS

REV.	DESCRIPTION	DATE	APPROVED
0	INITIAL RELEASE	2-5-2024	SCC

**Part numbering scheme**

**BCR1 s - 12x32mm - MP - 5**

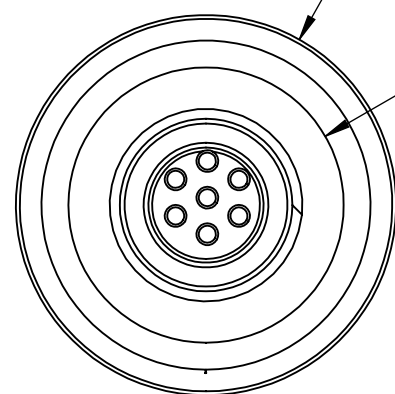
- Cable Length "L" in ft
- Male Pin (MP)
- Connector Size(32)
- Number of Contacts(7, 8, 12, 16)
- Bulkhead Mtrl (a=aluminum 6061, b=brass, p=peek, s=316 SST, t=titanium)
- Bulkhead Connector Receptacle, Face Seal (BCR1)



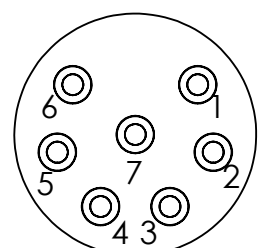
"L" Length  
ft

( $\phi$  1.98)

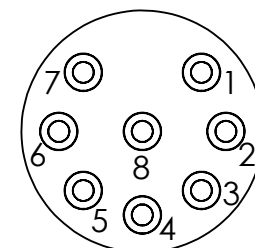
$\phi$  1.43  
O-ring Groove ID  
(2-029)



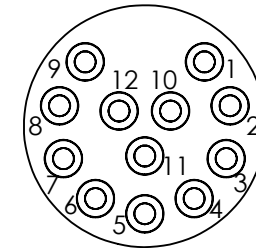
**FACE VIEW**



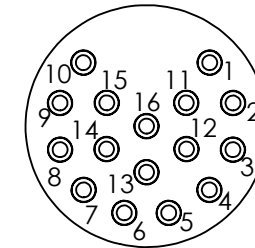
7 WAY  
(12 AWG Wire  
See Color Table)



8 WAY  
(12 AWG Wire  
See Color Table)



12 WAY  
(14 AWG Wire  
All wires white)



16 WAY  
(18 AWG Wire  
All wires white)

Contact to Wire Assignment  
(Based on ICEA Method 1 Color Code)

Contact #	Wire Color
1	Black
2	White
3	Red
4	Green
5	Orange
6	Blue
7	White w/Black Stripe
8	Red w/Black Stripe

**Specifications**

Voltage Rating	600V
Pressure Rating	10,000 psi
Shell Material	(see p/n table)
Contact Material	Gold Plated Cu Alloy
Dielectric Material	Neoprene
Wires	Teflon Insulation

UNLESS OTHERWISE SPECIFIED  
DIMENSIONS ARE IN INCHES  
TOLERANCES ARE:

FRACTIONS	DECIMALS	ANGLES
$\pm 1/16$	.XX $\pm$ .015	$\pm 1/2^\circ$
	.XXX $\pm$ .005	
	.XXX $\pm$ .0010	

BREAK ALL SHARP EDGES & CORNERS  
R.015. ALL DIA. TO BE  
CONCENTRIC WITHIN .004 TIR.

FINISH 125

DO NOT SCALE DRAWING

ORIGINAL JOB NO.

NAME	DATE
ENGR SCC	6/14/23

CHKD

APPRV

THIRD ANGLE  
PROJECTION

GD&T IAW ASME Y14.5



AK Industries phone: 310-762-1600  
3115 E. Las Hermanas St. fax: 310-762-1616  
Rancho Dominguez, CA 90221 e-mail: info@ak-ind.com

**BCR, 32 mm, Face Seal, Pins**

SIZE	FSCM NO.	DWG. NO.	REV
<b>B</b>		<b>BCR1-32mm-MP</b>	<b>0</b>
SCALE:	APPROXIMATE WEIGHT: LBS	SHEET 1 OF 1	



REVISION SYMBOL

THIS DRAWING CONTAINS PROPRIETARY INFORMATION OF  
AK INDUSTRIES. USE, DUPLICATION OR DISCLOSURE, IN  
WHOLE OR IN PART, IS STRICTLY PROHIBITED WITHOUT  
EXPRESS WRITTEN PERMISSION OF AN AUTHORIZED  
REPRESENTATIVE OF AK INDUSTRIES.

6

5

4

3

2

1